

# CASTLETON

## Versatile planter



### Street Design Limited

Unit 35  
Hayhill Industrial Estate  
Barrow upon Soar  
Leicestershire LE12 8LD

#### Contact us:

Telephone: 01509 815335  
Fax: 01509 815332  
Email: [sdl@street-design.com](mailto:sdl@street-design.com)  
Web site: [www.street-design.com](http://www.street-design.com)

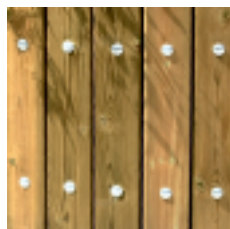


## MATERIAL FINISHES

### Standard finishes

#### FSC treated redwood standard finish

As standard, all FSC treated redwood planters will be supplied with a natural finish. The preservative treatment process will colour the timber a light brown/green.



#### Aged natural treated redwood

Left to weather naturally, the timber will eventually turn a silver grey colour.



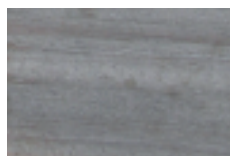
#### FSC iroko hardwood standard finish

As standard, all FSC iroko hardwood planters will be supplied with a natural finish. Due to the nature of the material and the density of the grain, iroko hardwood is not capable of taking a preservative treatment. Iroko hardwood is a naturally durable material, giving a life expectancy in excess of a treated softwood.



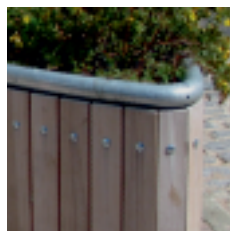
#### Aged natural iroko hardwood

Left to weather naturally, the timber will eventually turn a silver grey colour.



#### Mild steel standard finish

After fabrication, the 60.3mm diameter top rail will be hot dip galvanised.



#### Stainless steel standard finish

After fabrication, the 60.3mm diameter top rail will be dull polished.



### Optional finishes at extra cost

#### FSC treated redwood wood optional finish

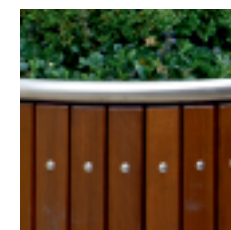
As an optional extra, the FSC treated redwood can be supplied with a stained finish. This will be applied after the timber treatment process. The standard stain will be 3 coats of Ronseal quick drying water based stain. The standard colour will be teak. Other stains and colours can be applied upon request.



*Optional teak stained finish*

#### FSC iroko hardwood optional finish

As an optional extra, the FSC iroko hardwood planters can be supplied with a stained finish. The standard stain will be 3 coats of Ronseal quick drying water based stain. The standard colour will be teak. Other stains and colours can be applied upon request.



*Optional teak stained finish*

#### Mild steel optional finish

After fabrication and hot dip galvanising, the 60.3mm diameter top rail can be polyester powder coated. They can be powder coated to any RAL colour depending on product quantity and stock levels of powder colours. Depending on stock levels the powders are available in 3 gloss levels; gloss, satin and matt.



*Optional polyester powder coated finish*