

KENSINGTON planter

MATERIAL FINISHES

Street Design Limited

Unit 35
Hayhill Industrial Estate
Barrow upon Soar
Leicestershire LE12 8LD

Contact us:

Telephone: 01509 815335
Fax: 01509 815332
Email: sdl@street-design.com
Web site: www.street-design.com



Standard finish

FSC treated redwood standard finish

As standard, all FSC treated redwood planters will be supplied with a natural finish. The preservative treatment process will colour the timber a light brown/green.



Aged natural treated redwood

Left to weather naturally, the timber will eventually turn a silver grey colour.



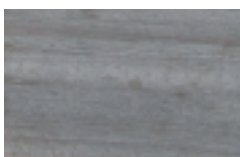
FSC iroko hardwood standard finish

As standard, all FSC iroko hardwood planters will be supplied with a natural finish. Due to the nature of the material and the density of the grain, iroko hardwood is not capable of taking a preservative treatment. Iroko hardwood is a naturally durable material, giving a life expectancy in excess of a treated softwood.



Aged natural iroko hardwood

Left to weather naturally, the timber will eventually turn a silver grey colour.



Mild steel standard finish

After folding and punching, the 50x5mm mild steel flat external straps will be hot dip galvanised. The galvanised straps will require no further maintenance.



Stainless steel standard finish

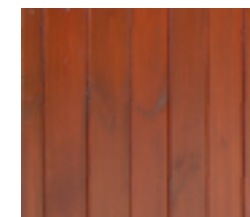
After folding and punching, the 50x3mm stainless steel flat external straps will be dull polished. The stainless steel straps will require no further maintenance.



Optional finish at extra cost

FSC treated redwood wood optional finish

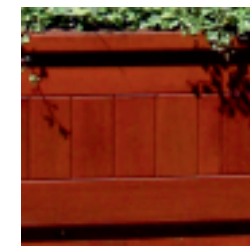
As an optional extra, the FSC treated redwood can be supplied with a stained finish. This will be applied after the timber treatment process. The standard stain will be 3 coats of Ronseal quick drying water based stain. The standard colour will be teak. Other stains and colours can be applied upon request.



Optional teak stained finish

FSC iroko hardwood optional finish

As an optional extra, the FSC iroko hardwood planters can be supplied with a stained finish. The standard stain will be 3 coats of Ronseal quick drying water based stain. The standard colour will be teak. Other stains and colours can be applied upon request.



Optional teak stained finish

Mild steel optional finish

After fabrication and hot dip galvanising, the 60.3mm diameter top rail can be polyester powder coated. They can be powder coated to any RAL colour depending on product quantity and stock levels of powder colours. Depending on stock levels the powders are available in 3 gloss levels; gloss, satin and matt.



Optional polyester powder coated finish